



Issue 2025- 10

Search the Catalog and
Check Your Account



Changes

Greetings!

Just as the season has changed, so there are changes at the library we want to make you aware of.

First, is a community outreach program. Because of the impact on our neighbors who rely on SNAP benefits, we are collecting food and other necessary items. You can drop off your donations when you visit the library, and we will bring them to the food pantry for you. These include perishable items, as we will drop off daily. See the flyer below for ideas of items you might not think about people needing.

Second, we have changed the time of our Preschool Story Time. Historically, this program has been in the morning. But in seeing the current demographics and availability of those who attend the program, we changed to a bi-monthly format and have moved it to 1:30pm, right before picking up older siblings. We hope that this time is more convenient for parents.

And last, the closure of our primary book vendor has left us (and other libraries across the nation) scrambling. We have submitted orders with our new vendors. Hopefully, new releases will be coming in quickly. We thank you for your patience.

With a quiet few weeks ahead, we hope you will visit to pick up books and movies, to attend programs, or just to say hello.

Have a good day,

Laura

Laura Clerkin
Library Director
lcclerkin@bethlehemnhlibrary.gov

FOOD DONATIONS COLLECTED HERE *YOU CAN HELP!*

NOVEMBER 1- 30

In an effort to help our neighbors experiencing food insecurity due to reduced SNAP benefits, the library is collecting your donations, and we will deliver them to the food pantry.

Save a trip - drop off at the library!

Uncommon items you might consider donating

- Milk - refrigerated or boxed
- butter
- pop-top canned goods
- can opener
- cooking oil
- salt and pepper
- sugar and flour
- tuna
- crackers for soup
- cake mix and frosting
- dish soap
- feminine hygiene products
- toothpaste
- diapers and wipes



Every little bit helps!

PROGRAMS FOR ADULTS

Tuesdays: Mah Jongg 12:30-2:30pm

All Skill levels welcome!

Fridays: Let's Talk 10:15-11:30am

An informal conversation with a different topic/theme each week. A thoughtful, safe, and open discussion. Coffee included!

11/7 Supernatural

11/14 Hunting

11/21 If you could have had a different career



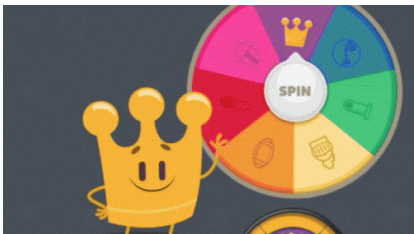
Have Yourself a Simpler Holiday Friday, 11/7 11:30am

With guest speaker Marc Morgan, we'll discuss ways to have a greener holiday, how to cut down on waste, and simple gift ideas.
Part of our Simple Living program series.



Death Cafe Monday 11/17 5:30pm

A Death Cafe is a group directed discussion of death with no agenda, objectives or themes. A Death Cafe offers the opportunity to talk about death, something that affects us all. It is a discussion group rather than a grief support or counseling session.
Refreshments will be served.



Trivia Night Wednesday 11/19 6pm

Our monthly trivia program - one week early!!
All ages welcome for some friendly competition!

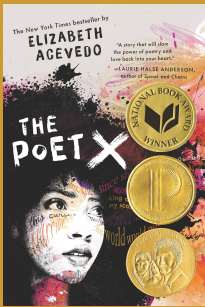
PROGRAMS FOR READERS



Not Your Grandma's Book Club

Saturday 11/1 11am

Want to talk about books, but short on time? Join our newest book club!
No required reading!
Come as you are, and talk about what you've been reading!
Come away with awesome book recommendations!
We have coffee!



Readers Cafe Book Club Thursday 11/12 1:30pm

AND Saturday 11/15 9am

Xiomara Batista has plenty she wants to say, and she pours all her passion onto the pages of a leather notebook, reciting the words to herself like prayers.
She is invited to join her school's slam poetry club, but she doesn't know how she could ever attend without her Mami finding out. Still, she can't stop thinking about performing her poems. Because in the face of a world that may not want to hear her, Xiomara refuses to be silent.

PROGRAMS FOR CHILDREN

Mondays: Lego Club 2:30-3:30pm For ages 5-12

Every other Tuesday: Preschool Story Time 1:30pm
For ages 2-5

11/4 Dino-vember
11/18 Things that Go!

Thursdays: Arts & Crafts Club 2:30-3:30pm For ages 5-12

11/6 Jewelry and Beading crafts
11/13 Native American Rainsticks
11/20 Thanksgiving crafts

Every other Friday: Tabletop Gaming Club 11/7 and 11/21
For ages 10 and up

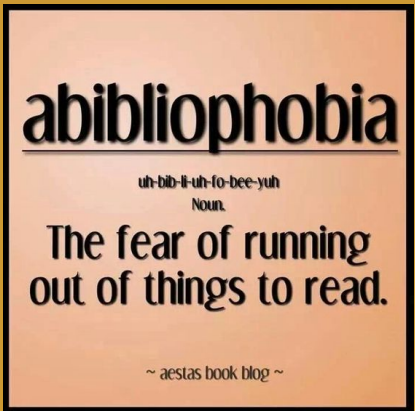
Play new games, and old favorites! Bring your friends!

SPECIAL EVENT



Stay & Play at the Grocery Store
Saturday, November 8th 11am-12:30pm

Get ready for Thanksgiving!
We'll play grocery store with play food, baskets and a cashier station!
Special thanks to Littleton Food Co-op for contributing to the fun!



The holidays are fast approaching. Don't be caught with nothing to read, or you might have to do something drastic - like clean!

Holiday closures:

Tuesday, November 11th
Thursday, November 27th - Saturday, November 29th
Thursday, December 25th
Thursday, January 1st

Holiday Hours Changes:

Wednesday, November 26th 10am-4pm
Wednesday, December 24th 10am-4pm
Wednesday, December 31st 10am-4pm

Saturday, December 6th



They'll be crafts, cookie decorating, stories by Mrs. Claus, and general merriment!



\$25 gift certificate to Legacy Books



Make one batch, go home with an assortment, sure to please all your holiday guests!



Bethlehem Public Library

2245 Main Street
Bethlehem, NH 03574
603-869-2409

Email Us

Bethlehem Public Library | PO Box 250 2245 Main Street | Bethlehem, NH 03574 US

[Unsubscribe](#) | [Update Profile](#) | [Constant Contact Data Notice](#)



Try email marketing for free today!